

306

Colours & Trims
Equipment & Options



PEUGEOT
THE DRIVE OF YOUR LIFE

Colours



Bianca White



Scarlet Red



Dragoon Blue



Black



Platinum Silver



Sigma Blue



Nile Blue



Venetian Green



Aquamarine



Cherry Red



Evergreen



Sundance Yellow



Diablo Red



Cosmos Grey



China Blue



Provence Blue



Blaze Yellow



Egyptian Red

Technical Specification

306

	1.4 L/LX	1.6 L/LX/GLX	1.8 auto LX/GLX	1.9 D L/LX	1.8 16v XS/GLX	1.9 TD L/LX/GLX/ D Turbo	2.0 16v XSi/ Cabriolet/Roadster	2.0 16v Rallye/ GTI-6	2.0 16v auto Cabriolet/ Roadster
Number of doors	2 door						●		●
	3 door				● (XS only)	● (D Turbo only)	● (XSi only)	●	
	4 door	● (LX only)				● (LX only)			
	5 door	●	●	●	● (GLX only)	●	● (XSi only)		

ENGINE

	1360	1587	1761	1905	1761	1905	1998	1998	1998
Cubic capacity (cc)	1360	1587	1761	1905	1761	1905	1998	1998	1998
Number of valves	8	8	8	8	16	8	16	16	16
Number of cylinders	4	4	4	4	4	4	4	4	4
Maximum power BHP at ... RPM	75 @ 5500	90 @ 5600	103 @ 6000	70 @ 4600	112 @ 5500	90 @ 4000	135 @ 5500	167 @ 6500	135 @ 5500
Maximum torque (MKg) at ... RPM	11.5 @ 3400	14.0 @ 3000	16.0 @ 3000	12.5 @ 2000	16.1 @ 4250	20.5 @ 2250	18.7 @ 4200	20.0 @ 5500	18.7 @ 4200
Electronic fuel injection	Multipoint	Multipoint	Multipoint	Multipoint	Multipoint	Multipoint	Multipoint	Multipoint	Multipoint
Unleaded fuel only	●	●	●	Diesel	●	Diesel	●	●	●

WEIGHT KG

2 door	2.0		2.0 auto				
Kerb weight	1270		1295				
Gross vehicle weight	1680		1705				
Gross train weight	2680		2705				
Unbraked trailer	680		680				
Maximum towing weight*	1000		1000				
3 door	1.8 16v	1.9 TD	2.0 16v	2.0 16v (Rallye)	2.0 16v (GTI)		
Kerb weight	1095	1135	1160	1175	1215		
Gross vehicle weight	1560	1585	1625	1630	1630		
Gross train weight	2560	2585	2625	2430	2430		
Unbraked trailer	580	600	610	640	640		
Maximum towing weight*	1200	1200	1200	1200	1200		
4 door	1.6	1.9 TD					
Kerb weight	1100	1165					
Gross vehicle weight	1575	1635					
Gross train weight	2475	2635					
Unbraked trailer	585	620					
Maximum towing weight*	1200	1200					
5 door	1.4	1.6	1.9 D	1.9 TD	1.8 auto	1.8 16v	2.0 16v
Kerb weight	1030	1090	1100	1155	1115	1115	1190
Gross vehicle weight	1480	1580	1580	1630	1600	1600	1640
Gross train weight	2380	2480	2530	2630	2600	2600	2640
Unbraked trailer	550	580	580	610	590	590	620
Maximum towing weight*	1200	1200	1200	1200	1200	1200	1200

DIMENSIONS mm

	2 door	3 door	4 door	5 door
Overall length	4179	4030	4267	4030
Overall width	1680	1680	1680	1680
Overall height	1356	1380	1386	1380
Wheelbase	2540	2580	2580	2580
Volume: (dm ³) rear seats in position, to parcel shelf height	274	338	463	338
Volume: (dm ³) rear seats folded, to parcel shelf height		637		637

* Maximum braked trailer towing weight, within the overall gross train weight limit.

Technical Specification

306

1.4 L/LX 1.6 L/LX/GLX 1.8 auto LX/GLX 1.9 D L/LX 1.8 16v XS/GLX 1.9 TD L/LX/GLX/D Turbo 2.0 16v XS/Cabriolet/Readster 2.0 16v Rallye/GTI-8 2.0 16v auto Cabriolet/Readster

TRANSMISSION

4-speed auto
5-speed manual
6-speed manual

BRAKES

Ventilated front discs
Rear drum
Rear discs
Servo assistance
Anti-lock brakes

STEERING

Power steering

SUSPENSION

Front
Rear

Independent with Macpherson type struts and anti-roll bar
Independent trailing arms with transverse torsion bars

PERFORMANCE (Half Payload)

	1.4	1.6	1.8 auto	1.9 D	1.8 16v	1.9 TD	2.0 16v	2.0 16v	2.0 16v auto
Maximum speed (mph)	102	111	109	99	118	111	125 (XS)/122	137 (Rallye)/135	120
Acceleration 0-62 mph (sec)	14.7	13.5	15.1	18.0	11.5	13.7	10.4 (XS)/11.1	8.7 (Rallye)/8.8	14.1
0-1000m (sec)	38.2	34.8	36.3	38.8	33.0	35.7	31.9 (XS)/32.6	29.8 (Rallye)/29.9	35.0

FUEL TANK

Capacity (litres)

60 60 60 60 60 60 60 (XS)/56 60 56

ECE NEW NORMS 93/116 MPG (Litres/100 KM)

	1.4	1.6	1.8 auto	1.9 D	1.8 16v	1.9 TD	2.0 16v	2.0 16v	2.0 16v auto
ECE Urban Cycle Consumption	31.0 (8.1)	28.5 (10.0)	21.9 (12.9)	34.0 (8.3)	24.4 (11.6)	32.1 (8.8)	22.1 (12.8) (XS)/ 20.8 (13.6)	20.8 (13.6)	23.9 (13.7)
EUDC out-of-town Driving Consumption	33.4 (8.8)	48.7 (5.9)	40.9 (8.9)	53.3 (5.3)	46.3 (8.1)	54.3 (5.2)	40.4 (7.0) (XS)/ 38.8 (7.1)	39.8 (7.1)	42.8 (7.2)
Mixed ECE + EUDC	40.9 (8.5)	38.7 (7.4)	31.9 (8.1)	44.1 (6.4)	34.9 (8.1)	42.8 (6.6)	31.0 (8.1) (XS)/ 30.1 (8.4)	30.1 (9.4)	30.4 (8.6)

O³ Joint options

Equipment & Options

308

L LX GLX XS/D Turbo XSI Rallye GTI - 6 Cabriolet/
Roadster

IN CAR ENTERTAINMENT

Roof mounted sports aerial	●	●	●	●	●	●	●	●	●	●
Fascia integrated Clarion 4 speaker stereo/radio cassette with remote control and RDS - CD compatible	●	●	●	●	●	●	●	●	●	●
2 additional tweeters										●
Boot mounted 6 disc CD autochanger	○	○	●	●	●	○	●	●	●	●
Steering column remote control	●	●	●	●	●	●	●	●	●	●

INSTRUMENTS

Speedo with digital odometer/digital trip recorder	●	●	●	●	●	●	●	●	●	●
Fuel and water temperature gauges	●	●	●	●	●	●	●	●	●	●
Rev counter	●	●	●	●	●	●	●	●	●	●
External temperature gauge		●	●		●		●	●	●	●
Oil pressure gauge						●	●	●	●	●
Oil temperature gauge						●	●	●	●	●
Digital clock	●	●	●	●	●	●	●	●	●	●
Lights on warning alarm	●	●	●	●	●	●	●	●	●	●

INTERIOR FEATURES

Leather steering wheel			○ ¹		●		●	●	●
Leather gearshift knob & gaiter			○ ¹		●		●	●	●
Cloth inserts in door to match seats	●	●	●	●	●	●	●	●	●
Front and rear armrests	●	●	●	●	●	●	●	●	●
Carpet trimmed rear parcel shelf	●	●	●	●	●	●	●	●	●
Trimmed loadspace side walls	●	●	●	●	●	●	●	●	●
Front seat back map pockets (not 3 door)	●	●	●	●	●				
Extended centre console	●	●	●	●	●	●	●	●	●
Additional front/rear carpet mats									○ ²
Fascia/central facade finish	Mercury	Mercury	Polished wood	Mercury	Mercury	Brushed aluminium	Brushed aluminium	Polished wood	
Aluminium gear lever knob							●		

EXTERIOR FEATURES

Tailgate handle with lion motif	●	●	●	●	●	●	●	●	●
Body colour sports bumper aprons	●	●	●	●	●	●	●	●	●
Body colour door mirrors		●	●		●	●	●	●	●
Body colour door handles			●	●	●	●	●	●	●
Specific front sports apron				●	●	●	●	●	●
Rear spoiler				●	●	●	●	●	●
Narrow bodyside mouldings	●	●	●	●	●	●	●	●	●
Black centre pillars		●	●	●	●	●	●	●	●
Full wheel covers	●	●	Alloys	Alloys	Alloys	Alloys	Alloys	Alloys	Alloys
Alloy wheels with locking wheel nuts (steel spare)			●	●	●	●	●	●	●
Tyre size	185/65 - 14	185/65 - 14	185/65 - 14	185/65 - 14	185/55 - 15	195/55 - 15	185/55 - 15	195/55 - 15	195/55 - 15
Black/Metallic/Pearlescent paint	○	○	○	○	○	○ Black	○	○	○ (M/P)
Chrome exhaust extension						●	●	●	●
Colour coded hood									○*

EXTERIOR VISIBILITY

Halogen headlamps	●	●	●	●	●	●	●	●	●
Front fog lamps		●	●	●	●		●	●	●
Rear fog and reversing lamp	●	●	●	●	●	●	●	●	●

● Standard ○ Optional *Subject to body and interior colours

Equipment & Options

306	L	LX	GLX	X3/D Turbo	XSI	Rallye	GT - 6	Cabriolet/ Roadster
SAFETY								
Driver's airbag	●	●	●	●	●	●	●	●
Front passenger's airbag	○	○	○	○	●	●	●	●
Driver and front passenger seat mounted side airbags (only with front passenger airbag)	○*	○*	○*	○*	○*	●	●	●
Side impact beams	●	●	●	●	●	●	●	●
Side impact absorbent padding (front doors)	●	●	●	●	●	●	●	●
Force limiting pretensioned front seat belts	●	●	●	●	●	●	●	●
Front seat belt web grabbers	●	●	●	●	●	●	●	●
Reinforced rear seat fixings	●	●	●	●	●	●	●	●
High level third brake light	●	●	●	●	●	●	●	●
Recessed child proof lock catch	5 Door	●	●	5 Door	5 Door	●	●	●
Rear centre-lap & diagonal safety belt		4 Door						
Internally adjustable door mirrors	●			●		●		
Electrically operated and heated door mirrors		●	●		●		●	●
Dipping interior rear view mirror	●	●	●	●	●	●	●	●
Laminated windscreen/heated rear screen	●	●	●	●	●	●	●	Roadster
2-speed wipers with electric wash/intermittent wipe	●	●	●	●	●	●	●	●
Tailgate wash/wipe	●	● (incl. 4 DR)	●	●	●	●	●	●
Rear window wiper (4 door)		○						
Automatic front wiper incorporating rain sensor		●	●		●		●	
SECURITY								
Transponder engine immobiliser	●	●	●	●	●	●	●	●
Ultrasonic alarm		○	○	○	●		●	Voltage drop
Windscreen and rear window etched with 17 digit vehicle registration number	●	●	●	●	●	●	●	●
Deadlocks		●	●	●	●	●	●	●
Lockable glovebox	●	●	●	●	●	●	●	●
Spare wheel lock	●	●	●	●	●	●	●	●
COMFORT & CONVENIENCE								
Green tinted glass	●	●	●	●	●	●	●	●
Remote central locking of doors and tailgate/boot	●	●	●	●	●	●	●	●
Electric front windows		●	●	●	●	●	●	●
One touch lowering of driver's window			●	●	●		●	●
Electric rear windows			●	●	●		●	●
Electric tilt/slide glass sunroof with blind	○	○†	○	○†	○†		○	
Height adjustable steering wheel	●	●	●	●	●	●	●	●
Height adjustable front seat belts	●	●	●	●	●	●	●	●
Driver's clutch foot rest	●	●	●	●	●	●	●	●
Remote control fuel flap opening	●	●	●	●	●	●	●	●
Electric operation of hood								●
SEATING								
Height adjustment of driver's seat	●	●	●	●	●	●	●	●
Lumbar adjustment of driver's seat	○ ³	○ ³	●	○ ³	○ ³		●	●
Lumbar adjustment of passenger seat	○ ³	○ ³	○ ^{1/2}	○ ³	○ ³		●	●
Height adjustable front head restraints	●			●	●	●		
Fully adjustable front head restraints		●	●				●	●
Fully adjustable rear head restraints		●	●				●	○ ²
Split folding rear seat and squab (60/40)	●	●	●	●	●		●	
Sports front seats			○ ¹	●	●	●	●	●
Rear centre armrest		4 Door						
Cloth seat trim	Atlantis			Mustang	Mustang	Phoenix		
Velour seat trim		Renoir	Whisper					Bantoo
Alcantara suede/leather seat trim							●	
Leather trim			○ ¹					○ ²
HEATING & VENTILATION								
Illuminated heater controls & rheostat	●	●	●	●	●	●	●	●
Automatic air conditioning with temperature control		○†	●	○†	○†	○	●	○*

Trim materials



Atlantis Cloth

Renoir Velour

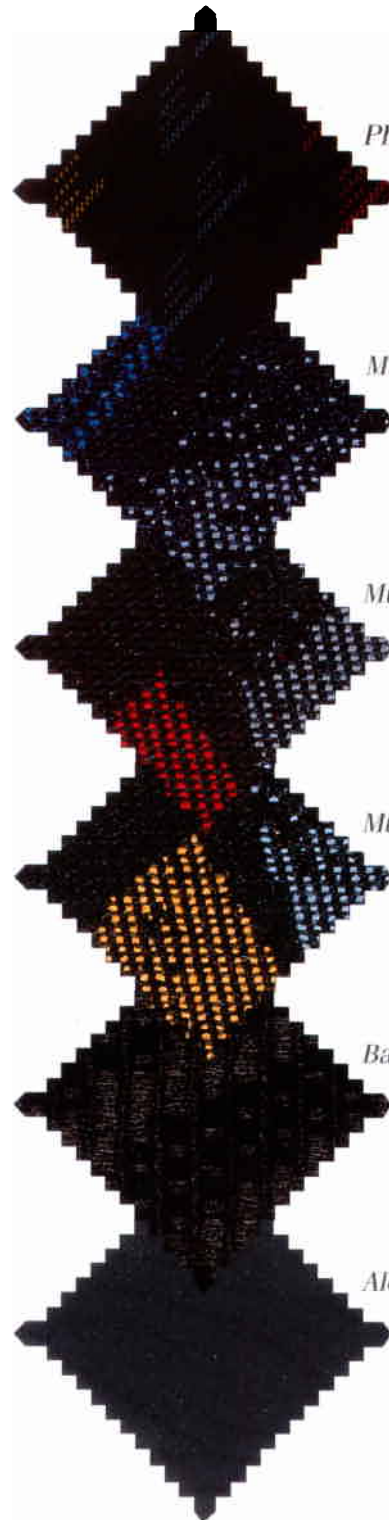
Whisper Velour

Sahara Tan Leather

Not available in UK

Amarante Red Leather

Storm Black Leather



Phoenix Cloth

Mustang Blue Cloth

Mustang Red Cloth

Mustang Yellow Cloth

Bantoo Velour

Alcantara Suede

Colours & Trims

	TRIMS						
	L	LX	GLX	D Turbo/ XS/XSI	Rallye	GTI-6	CABRIOLET/ ROADSTER
	Atlantis cloth	Renoir velour	Whisper ⁽¹⁾ velour	Mustang cloth	Phoenix cloth	Alcantara suede/leather	Bantoo ^{(2) (3)} velour
SOLID COLOURS							
Bianca White	Blue	Black	Grey	Black/Red	Black	Black	
Cherry Red	Blue	Black	Grey	Black/Red	Black		
Scarlet Red							Charcoal
Evergreen	Blue	Black	Grey				
Dragoon Blue	Blue	Black	Grey	Black/Blue			
Sundance Yellow							Charcoal
Black	Blue	Black	Grey	Black/Red	Black	Black	
METALLIC COLOURS							
Platinum Silver	Blue	Black	Grey	Black/Blue		Black	
Egyptian Red							Charcoal
Sigma Blue	Blue	Black	Grey				
China Blue							Charcoal
Nile Blue				Black/Blue		Black	
Provence Blue	Blue	Black	Grey	Black/Blue			
Venetian Green	Blue	Black	Grey				
Blaze Yellow				Black/Yellow		Black	Charcoal
Cosmos Grey							Charcoal
PEARLESCENT COLOURS							
Aquamarine							Charcoal
Diablo Red	Blue	Black	Grey	Black/Red		Black	Charcoal

⁽¹⁾ Tungsten leather available as an option

⁽²⁾ Coloured leather options available
Storm Black – All body colours
Sahara Tan – Cosmos, China, Aquamarine, Diablo
Amarante red – Cosmos, China

⁽³⁾ Colour coded hoods available
Marine blue hood – with China blue (not Amarante interior)
Bordeaux red hood – with Diablo red (not Sahara interior)



It is our policy to continually improve our vehicles in every way and we reserve the right to modify our vehicles' specification (including colour), equipment, accessories and characteristics or to discontinue any model, without notice, at any time.

Every endeavour has been made to ensure that the information, details and descriptions set out in this literature are correct, at the time of going to press. However, we are unable to guarantee that no changes have subsequently taken place to the specification (including colour), equipment, accessories and characteristics of, or relating to, any Peugeot vehicle, after the publication of this literature.

Although every effort is made to bring this literature up to date, from time to time, in order to avoid any misunderstandings, you are advised to check with your Peugeot dealer the specification (including colour), equipment, accessories and equipment relating to any Peugeot vehicle, prior to ordering.

Due to the limitations of the printing process, the colour and trims may differ slightly from the actual cars.